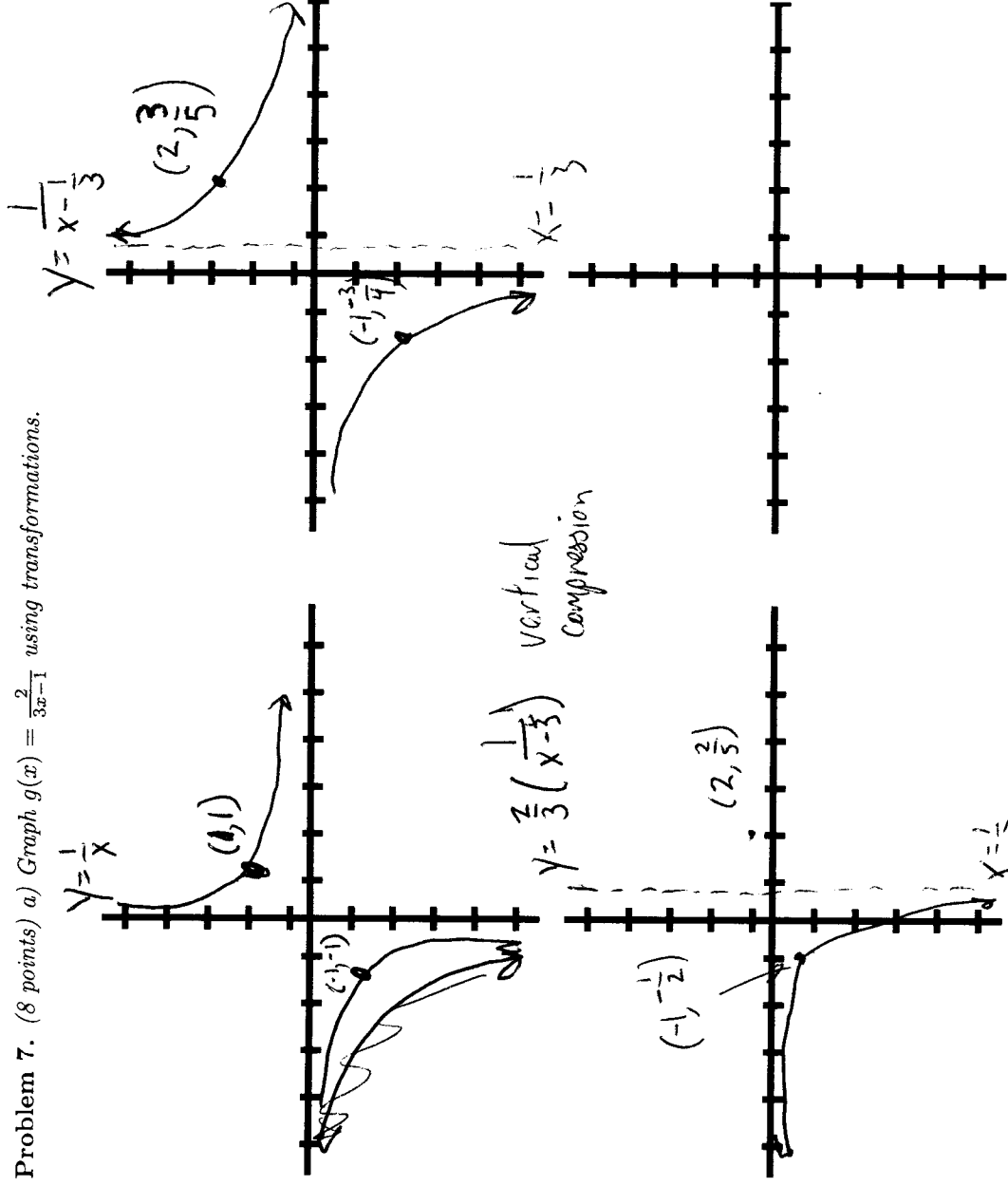


First write  $g(x)$  in transformations:

$$g(x) = \frac{2}{3(x-\frac{1}{3})}$$

(10 points)

Problem 7. (8 points) a) Graph  $g(x) = \frac{2}{3x-1}$  using transformations.



b) Give the domain of  $g(x)$ . (2 points)

Domain of  $g(x)$ :  
 $(-\infty, \frac{1}{3}) \cup (\frac{1}{3}, \infty)$